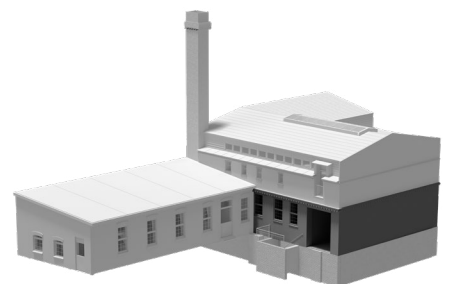




OLD LOFT

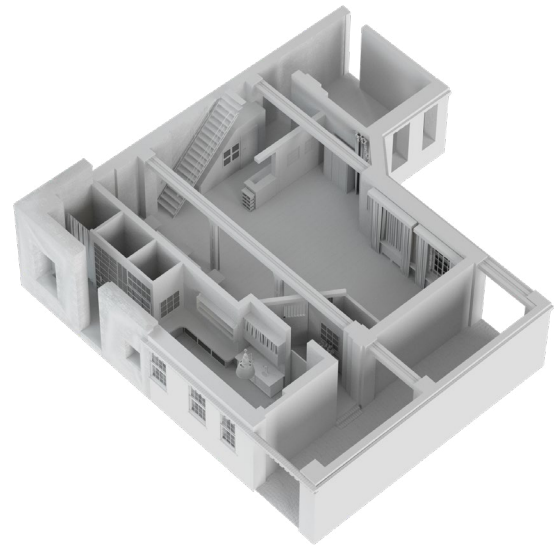
*Open space with
an industrial look*

Size: 120 m² | ground floor

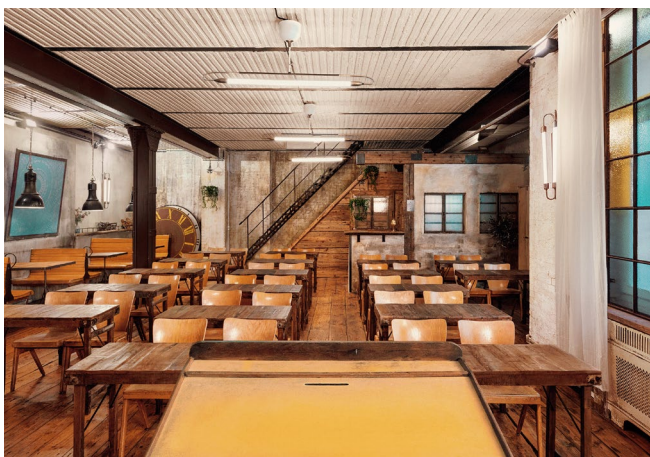


The typical Berlin factory floor character with oak floors and steel columns presents itself in the "belly" of the Dizzle.

Our Old Loft, often used as a dining room, is a great place to eat! Ideal for large dinners, as an additional workshop or presentation space, as a film studio or lounge.



Our chameleon room for workshops, as a back office or private restaurant



FACTS

Equipment

- 4 x old Berlin S-Bahn Séparées
- 4 x additional tables for S-Bahn
- 5 x round clock face tables
- Historic coloured window glazing
- Antique lectern

Sound

- K-array four-point sonication

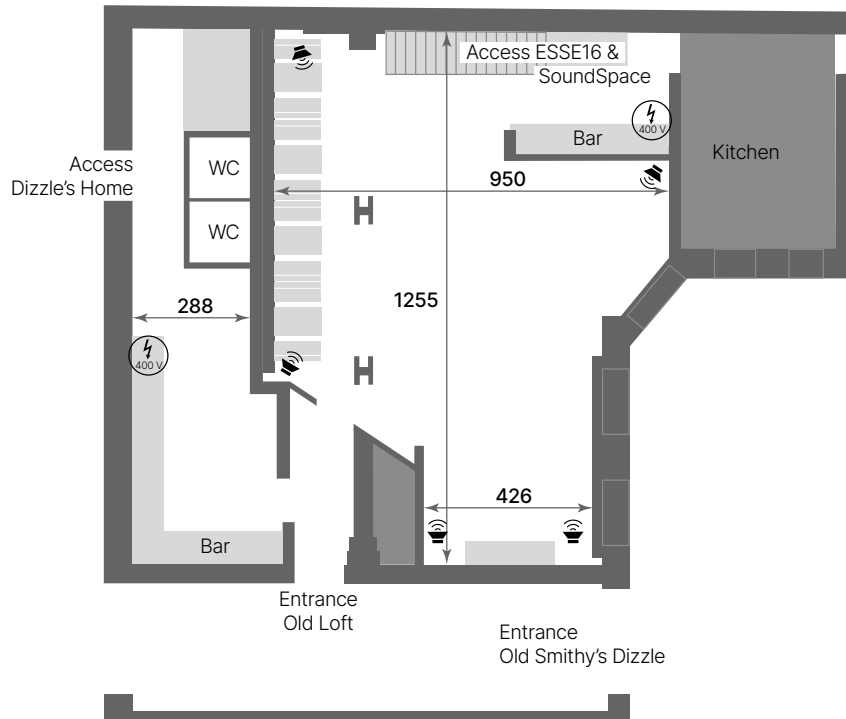
Light

- Daylight lamps
- Touchscreen-controlled LEDs (RGB)

Media

- 1.000 Mbit/s high-speed fibre optic network

FLOOR PLAN



SPECIALS

The Old Loft is our multi-talent and the kitchen is directly adjacent. So it often makes sense to rent in addition to the Dizzle's Home or the ESSE16.

The historic window glazing creates a unique lighting atmosphere and the room can be additionally customised with LED lighting.



Old Smithy's Dizzle

Contact: +49 30 2577 1090 | info@osd.events
www.old-smithys-dizzle.com