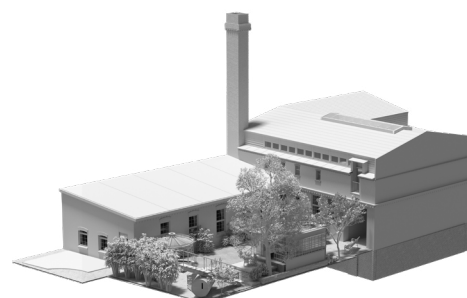


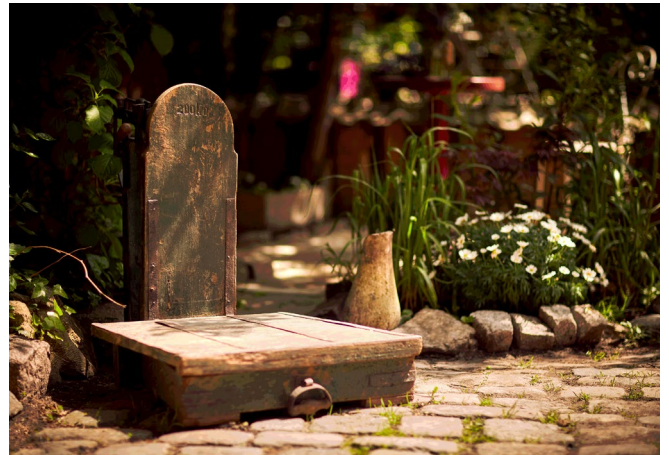


GARDEN

*Garden oasis with
waterfall and
covered fireplace*

Size: 200 m²





Green refuge for relaxing and unwinding, for receptions or for a perfect barbecue

The wholly covered green "lung" nestles up against the Old Smithy's Dizzle with small terraces and seating areas. Wrought-iron seating sets invite you to linger.

The covered fireplace can also be used as a barbecue area.

A chat under the Mirabelle tree clears the head again.



FACTS

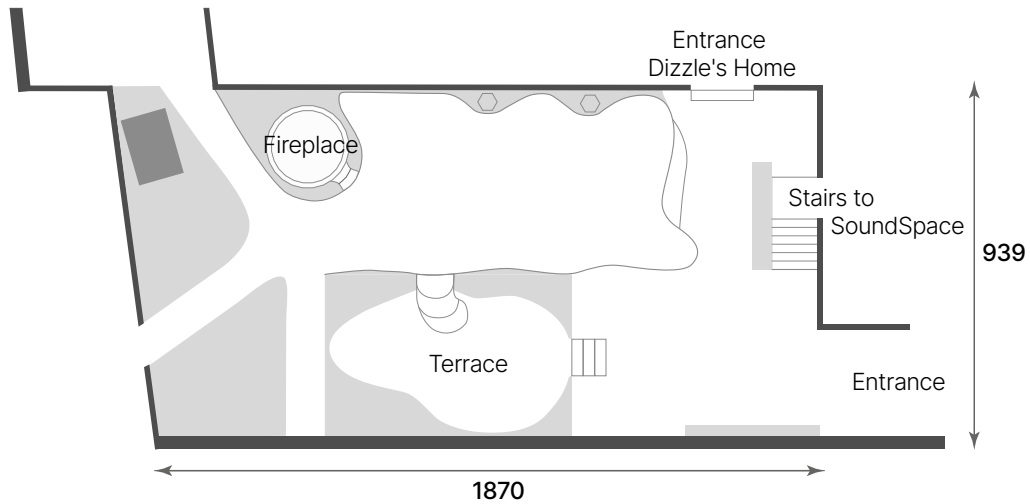
Equipment

- Covered fire and barbecue station
- Wrought-iron vintage seating
- Waterfall and pond

Sound

- Ambient sound system with Bose outdoor boxes

FLOOR PLAN



SPECIALS

The garden of Old Smithy's Dizzle is partly weather-protected. In addition, a sound barrier to the neighbouring courtyard not only ensures peace but also provides privacy.

The barbecue area has an integrated extractor in the glass roof so that up to 10 people can sit together comfortably.

