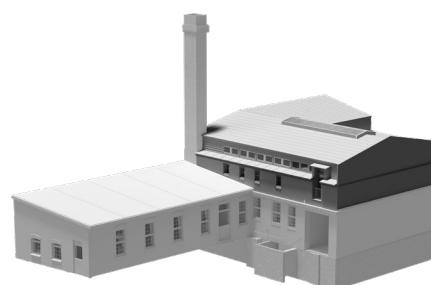




ESSE16

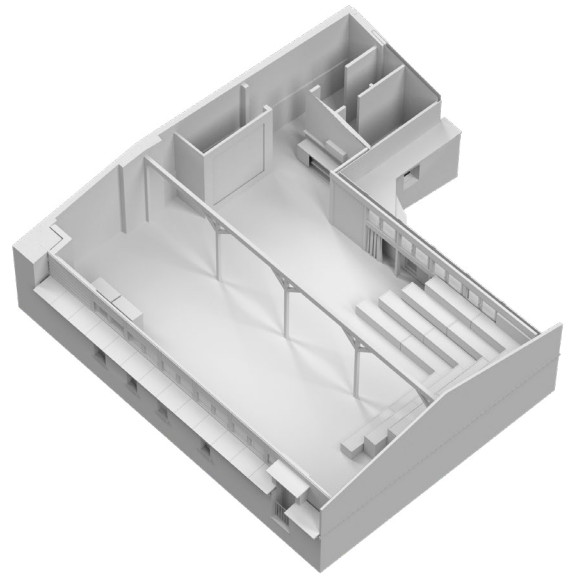
*Light-flooded
loft with a
view of the sky*

Size: 170 m² | first floor



The open loft in the attic impresses with its high gable construction. Light wood fixtures meet poured concrete floors.

In the "head" of the Dizzle, the inner horizon immediately widens.



Light-flooded open space



FACTS

Equipment

- Modular grandstand
- Bistro and show-cooking area
- Pre-installed pinboard area (4m wide)
- Air-conditioning system

Sound

- Sonance audio system with six-point sound system

Light

- Flexible, controlled lighting system

Media

- Touchscreen 75" rollable on stand (with Click-share)
- Presentation panel 85" rollable on stand
- Mobile screen (5×4m) & projector (5,000 ANSI lumens)
- 1.000 Mbit/s high-speed fibre optic network

FLOOR PLAN



SPECIALS

The ESSE16 is a flexible workspace: almost all elements in this space are rollable, and the stand system is modular. Workgroup furniture can also be used.

Two screens with a touch screen and click share, incl. a camera, are available.

