

*Six fully equipped technical areas, fully networked media system, backyard garden with fire pit.*

### ESSE 16

Conferences, open workspace, presentations, workshops

### HOME

Receptions, fine dining, workshops & creative meetings, theater stage, cinema, living room concerts

### Old Loft

Banquets, lectures, presentations, workshops, large dinners

### sound SPACE

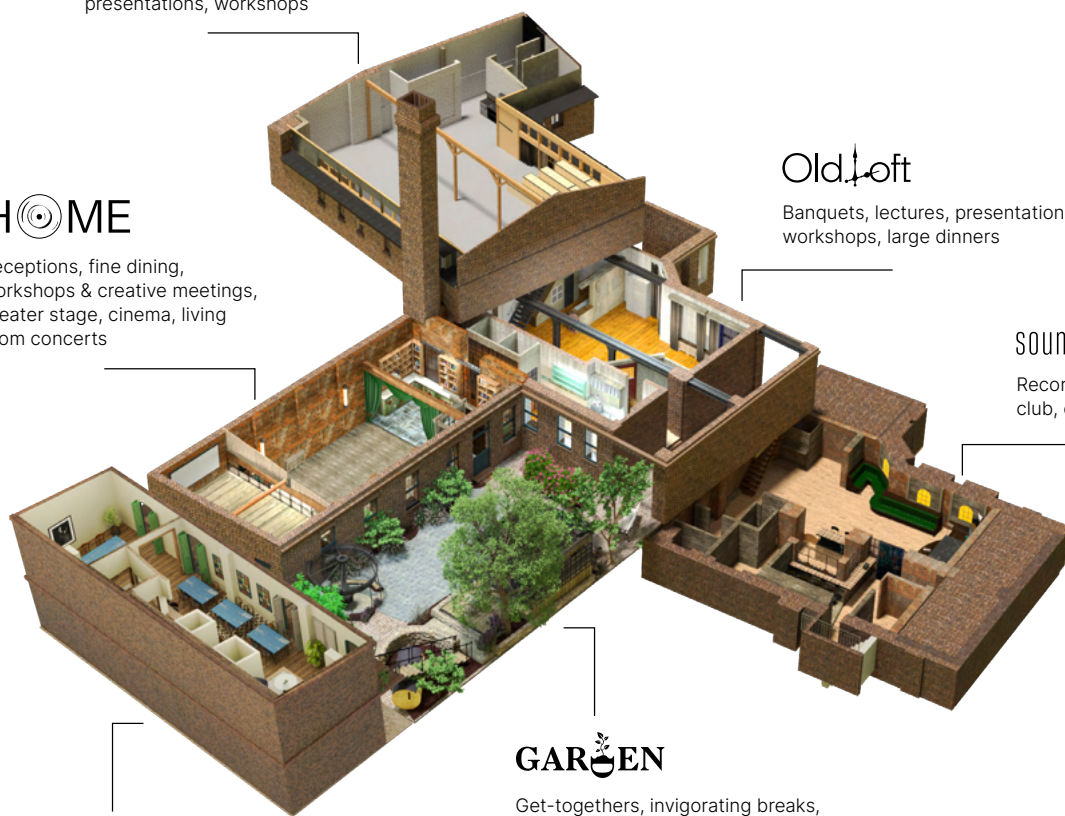
Record release, private club, coworking space

### GARDEN

Get-togethers, invigorating breaks, green oasis in the city

### THE HAÇIENDA

Private restaurant & listening





HOME



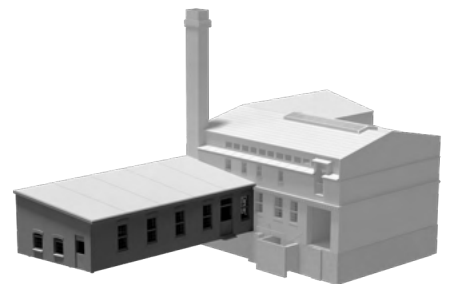
HOME

*Cozy atmosphere with  
wood and beautiful  
wrought ironwork*



Rear Projection

Size: 120 m<sup>2</sup> + 20 m<sup>2</sup>  
| Ground Floor (direct access to the garden)



Dimensions: 1920 × 1200 pixels | 6,670 ANSI lumens | 4 m diagonal

OSD | Mainzer Straße 16, 10247 Berlin  
Contact: +49 30 2577 1090 | [info@osd.events](mailto:info@osd.events)  
[www.osd.events](http://www.osd.events)





The brick walls of the former smithy house the "heart" of Old Smithy's Dizzle, directly connected to the evergreen garden.

Lots of wood, beautiful steel art, and countless indirect light sources create a cozy and warm atmosphere in our "living room."

The eye-catcher is the elegant green velvet theater curtain, which can be used to reduce the size of the room or create a stage setting in just a few simple steps.



## *A comfortable atmosphere for networking, get-togethers, and dinners*



### FACTS

#### Facilities

- Sofa corner in the private dining room
- Library seating area
- Theater stage including curtain (approx. 20 m<sup>2</sup>)
- Second floor with smoking lounge

#### Sound

- Audio concept by K-Array as four-point background sound reinforcement
- THX Klipsch 9.1 Surround-Sound
- Martion Audio HIFI sound as a horn-based, 4-way system
- DJ console

#### Light

- Daylight
- Quecksilberdampf lampen im Sonnenlichtspektrum
- Touchscreen-gesteuerte LEDs (RGB)

#### Media

- 1.000 Mbit/s Highspeed-Glasfasernetz
- 3D cinema with LG CF3DA projector
- Integrated cinema screen in landscape format (4m diagonal) incl. theater curtain
- Mediawall (7,3 × 0,8 m)

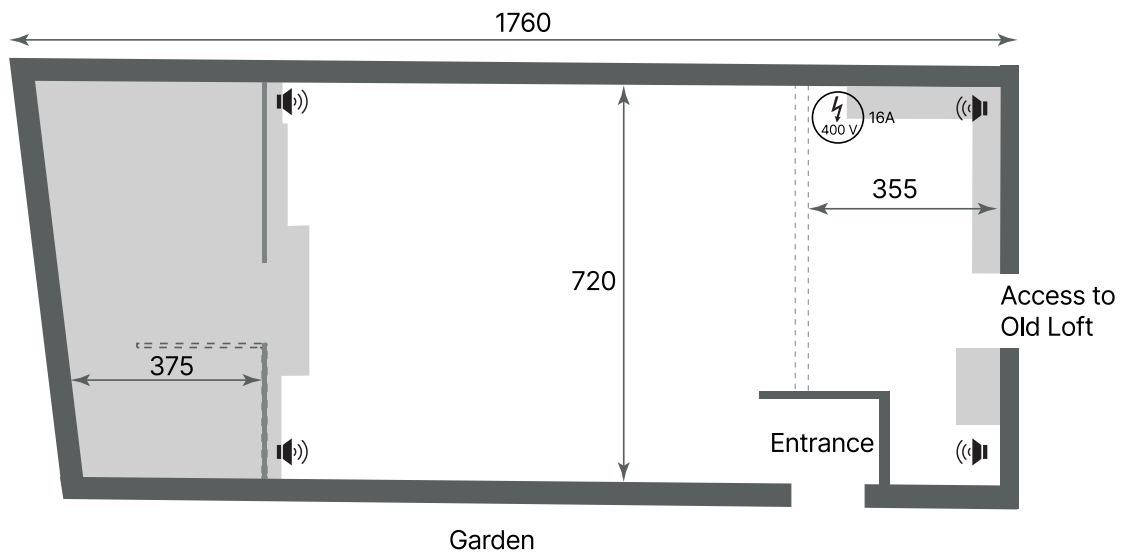


Dimensions: 3 × 1.5 m | 1920 × 1080 pixels | 2,500 ANSI lumens



Dimensions: 7.3 × 0.8 m | 3840 × 720 pixels | 7,000 ANSI lumens

## FLOOR PLAN



## SPECIALS

Three different sound systems are installed in Home. In addition to the mercury vapor lamps in the sunlight spectrum, the entire room can be illuminated using touchscreen-controlled LEDs.

A cinema screen (including theater curtain) is integrated into the room. On the high plateau, there is a 3D cinema and an elongated media wall on which individual content can be played.





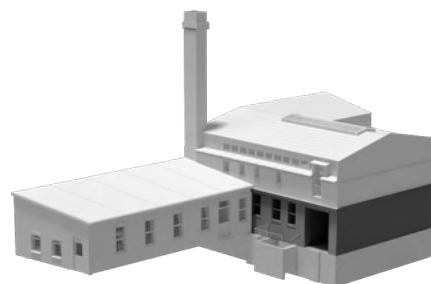
Old Loft



OLD LOFT

*Open space with an industrial look*

Size: 120 m<sup>2</sup> | Ground Floor



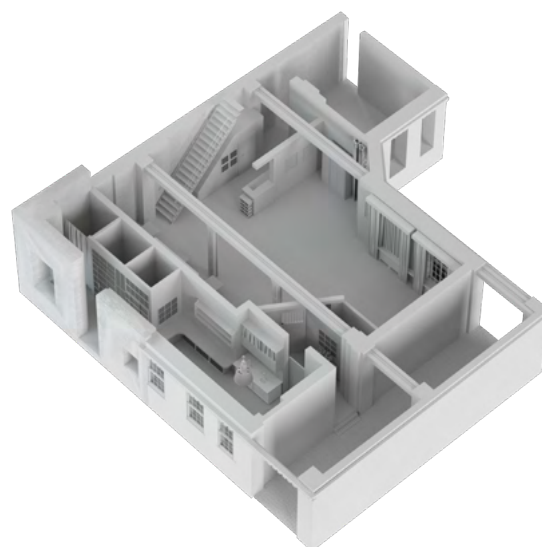
OSD | Mainzer Straße 16, 10247 Berlin  
Contact: +49 30 2577 1090 | [info@osd.events](mailto:info@osd.events)  
[www.osd.events](http://www.osd.events)





The typical Berlin factory floor character with oak planks and steel columns is evident in the “belly” of the Dizzle.

Our Old Loft, often used as a dining room, is a particularly pleasant place to eat! The Old Loft is ideal as an additional workshop or presentation room, as a film studio, or as a lounge.



## *Our chameleon room for workshops, as a back office, or private restaurant*



### **FACTS**

#### **Equipment**

- 4 x suburban railway sets with benches
- 4 x additional tables for suburban train sets
- 5 x round tables with dials
- Antique lectern
- Historic colored window glazing

#### **Sound**

- K-Array four-point sound reinforcement

#### **Light**

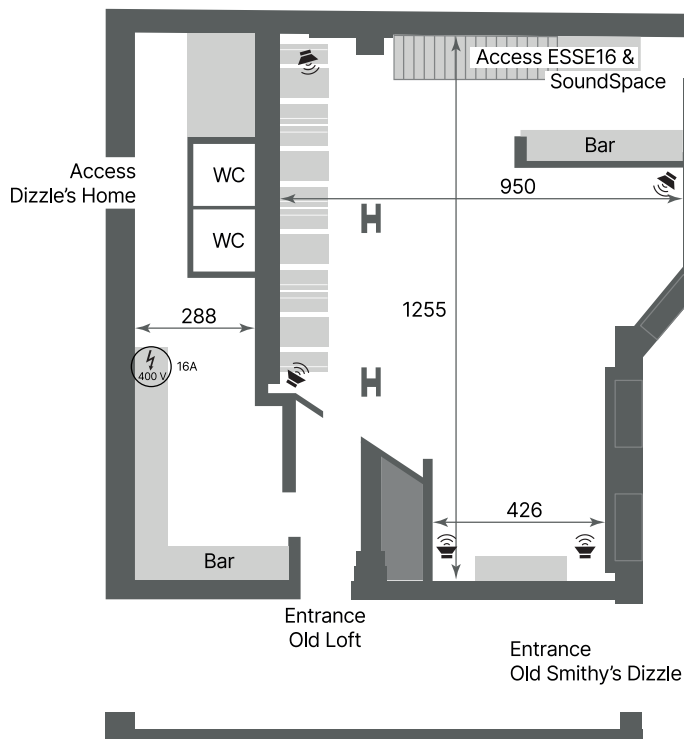
- daylight lamps
- Touchscreen-controlled LEDs (RGB)

#### **Media**

- 1,000 Mbit/s high-speed fiber optic network



## FLOOR PLAN



## SPECIALS

The Old Loft is our multi-talented space, with the kitchen directly adjacent. It often makes sense to rent it in addition to Dizzle's Home or ESSE16.

The historic window glazing creates a special lighting atmosphere, and the room can also be customized with LED lighting.







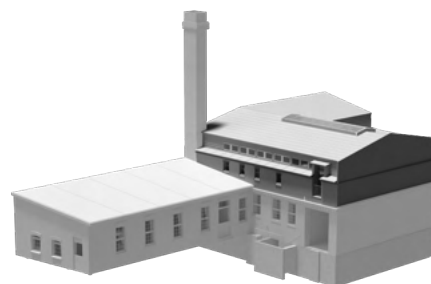
ESSE 16



ESSE16

*Light-filled loft  
with a view of the sky*

Size: 170 m<sup>2</sup> | First Floor (Above Old Loft)



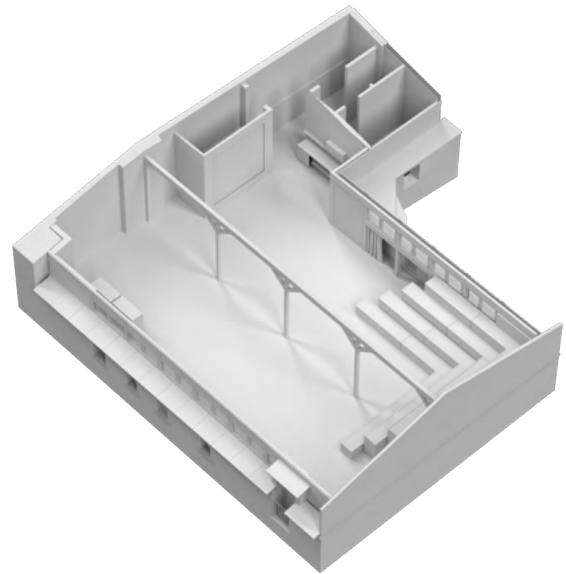
OSD | Mainzer Straße 16, 10247 Berlin  
Contact: +49 30 2577 1090 | [info@osd.events](mailto:info@osd.events)  
[www.osd.events](http://www.osd.events)





The light-filled loft in the attic impresses with its high gable construction. Light wood fixtures meet cast concrete floors.

In the "head" of the Dizzle, the inner horizon immediately expands.



## *Light-filled open space*



### **FACTS**

#### **Equipment**

- Modular grandstand
- Bistro
- Pre-installed pinboard area (4 m wide)
- Air conditioning

#### **Sound**

- Sonance audio system with six-point sound reinforcement

#### **Light**

- Flexibly controlled lighting system

#### **Media**

- 75" rollable touchscreen on tripod
- 85" presentation panel, rollable on tripod
- Mobile screen (5×4 m) & projector
- (5,000 ANSI lumens)
- 1,000 Mbit/s high-speed fiber optic network



## FLOOR PLAN



## SPECIALS


The ESSE16 is a flexible workspace: almost all elements in this room are rollable, and the grandstand system is modular. Workgroup furniture can also be used.

Two screens with touchscreen and Clickshare including camera are available.







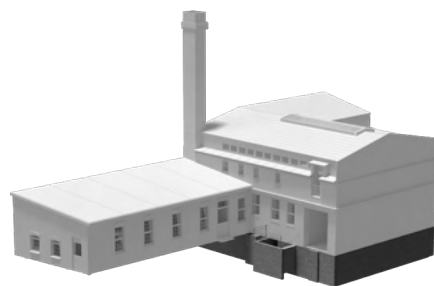
sound  SPACE



SOUNDSPACE

*Charming chalet with  
integrated American bar*

Size: 120 m<sup>2</sup> | Basement

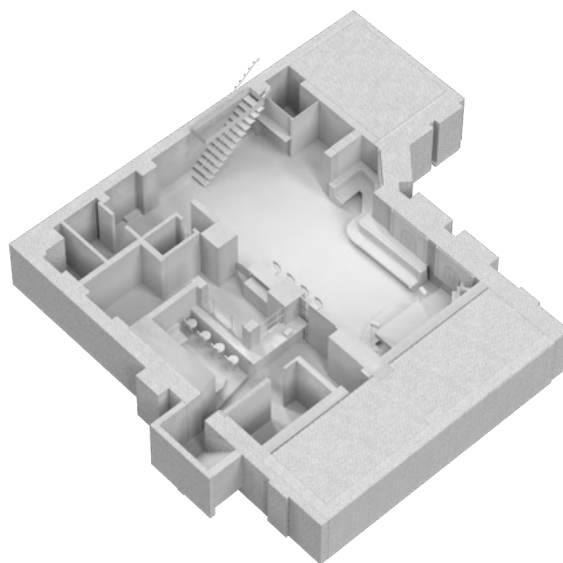


OSD | Mainzer Straße 16, 10247 Berlin  
Contact: +49 30 2577 1090 | [info@osd.events](mailto:info@osd.events)  
[www.osd.events](http://www.osd.events)

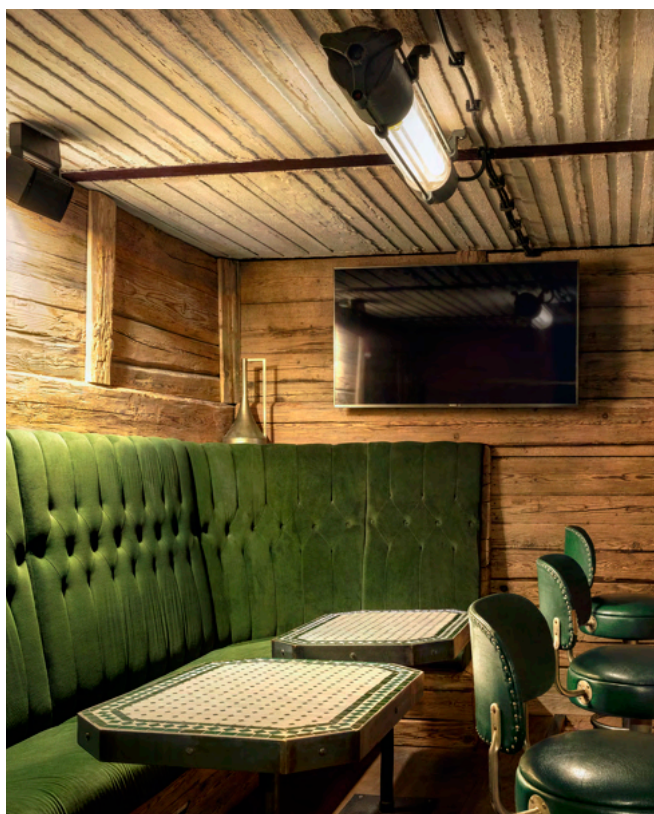


The sound space is a mix of warm oak wood, brickwork, and high-tech equipment.

The arched windows change color in time with the music. Sofas upholstered in forest green velvet invite you to relax and meditate in wonder. In the basement, the "soul" of Dizzle beats to the deep rhythm of its heart.



## *Networked sound office and retreat with a beautiful bar*



### **FACTS**

#### **Equipment**

- Sofaelemente Hauptraum
- Raucherlounge
- American Bar
- herunterfahrbares DJ-Pult & Bühnenbereich
- Belüftungsanlage und Schallisolierung

#### **Sound**

- Highend-Soundanlage mit angeschlossenen DJ-Pult

#### **Light**

- Touchscreen-gesteuerte LEDs (RGB)
- Lichtwechselsteuerung integriert in Bogenfenster (Tageslicht-Illumination möglich)

#### **Media**

- 16 workstations, each equipped with USB, Ethernet, and 230-volt connections





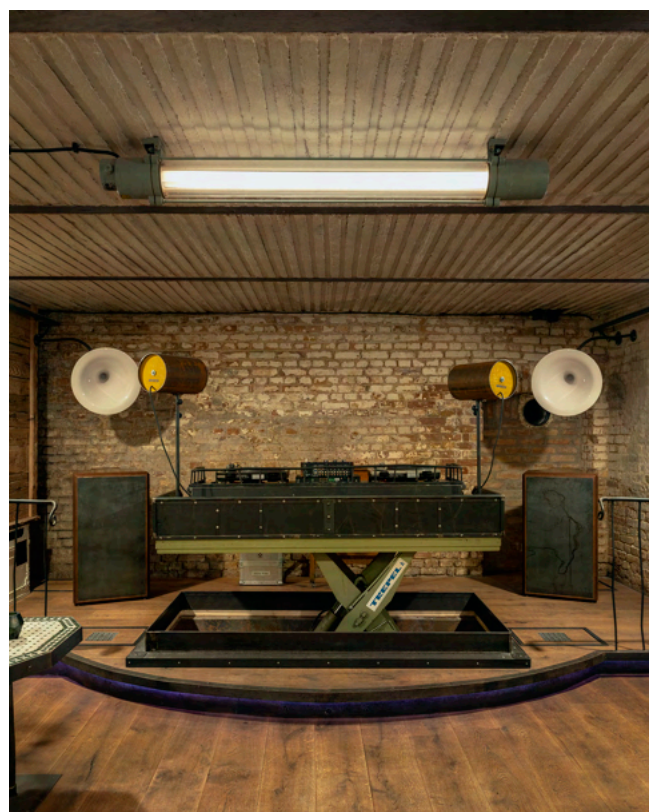
## FLOOR PLAN



## SPECIALS

The sound space is located in the basement and is completely soundproofed. The DJ booth can be lowered into the floor, creating a small stage area at the front of the room.

At the American Bar, cocktails are mixed right before your eyes, and there is a separate smoking lounge with ventilation at the back.





# THE HACIENDA

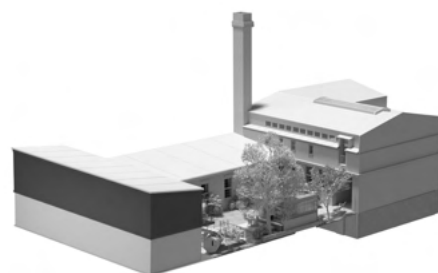
Flavors in Resonance



## THE HACIENDA

### *Flavors in Resonance*

Size: 100 m<sup>2</sup> | First Floor (Above Garden)







# THE HACIENDA

Flavors in Resonance

The Hacienda takes its name from the legendary club icon in Manchester – as a tribute to the spirit of experimentation, community, and sensory immersion that inspired an entire generation.

As an integral part of the OSD institution, our sound journey begins here with the awakening of the senses—through a culinary experience crafted with the utmost care, artistry, and intuition.

The Hacienda is much more than a place to dine—it is a space where music and cuisine naturally merge. A place of resonance, where flavors are composed with the same dedication, depth, and curiosity as sounds.

Covering an area of around 100 m<sup>2</sup>, the Hacienda offers a sweeping view of the OSD events and the idyllic garden from its balcony.



With space for up to 50 guests, it creates a warm, inviting atmosphere. In the characteristic style of OSD, it combines rustic charm with Mediterranean lightness and creative elegance.

Die stilvolle Bar und der Blick in die offene Vorbereitungsküche rundet das exklusive, sinnlich-verbundene Ambiente ab.



## SPECIALS

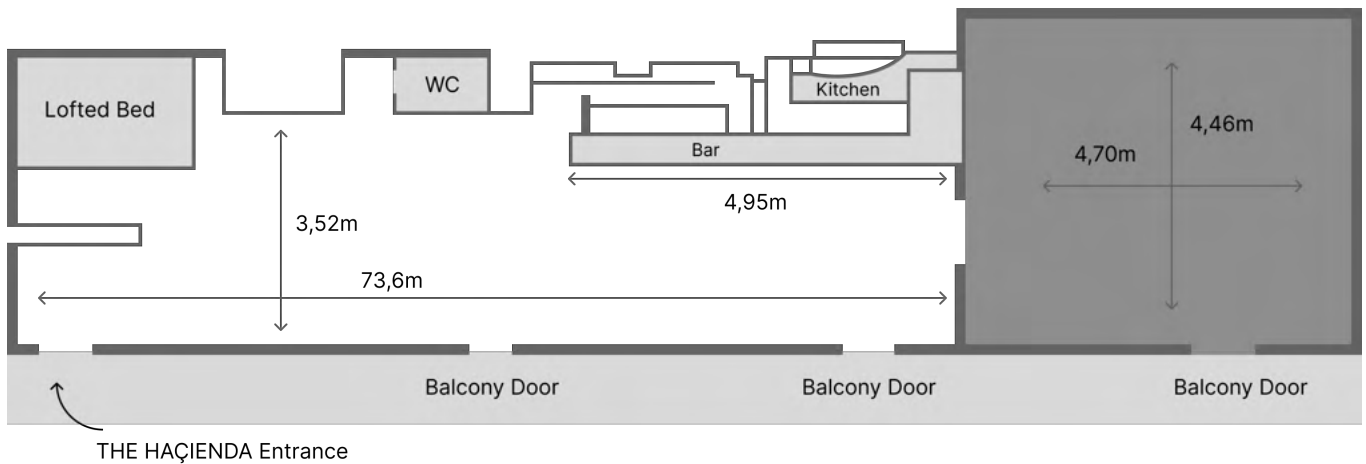
- Flexible setups for parties with up to 50 guests
- Small conferences and meetings with up to 20 people
- Beautiful terrace with a view of the evening sun – perfect for relaxing drinks and an inspiring atmosphere
- Indoor area with seating for up to 40 people in a variable arrangement.



# THE HAÇIENDA

Flavors in Resonance

## FLOOR PLAN



## FACTS

### Equipment

- Flexible sofa setup with a comfy lounge area for up to 16 people.
- Fully equipped bar
- A variety of setup options for up to 50 people – from a formal dinner to a casual standing party

### Technik & Sound

- Customized listening sound system from K-array for audiophile experiences
- DJ console with:
  - 2x Technics 1210 turntables
  - 2x Pioneer CDJ 3000
  - Rotary mixer for smooth transitions and warm sound

### Media & Connectivity

- 1,000 Mbit/s fiber optic high-speed internet for live streams, remote meetings, or digital experiences



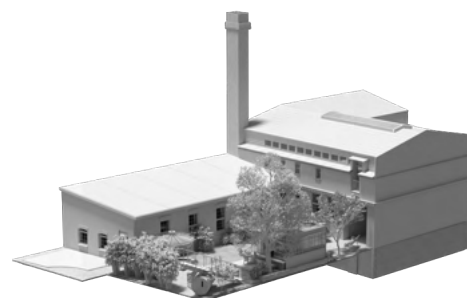




## GARDEN

# *Garden oasis with waterfall and covered fire pit*

Size: 200 m<sup>2</sup>







## *A green retreat for relaxation and unwinding, for receptions or a perfect barbecue*

The green lung nestles up to Old Smithy's Dizzle with small terraces and seating areas. Wrought-iron seating invites you to linger. The covered fireplace can also be used as a barbecue area. A chat under the mirabelle plum tree clears your head.



### **FACTS**

#### **Equipment**

- Covered fire pit and barbecue area
- Wrought iron vintage seating sets
- Seating areas, waterfall, and pond

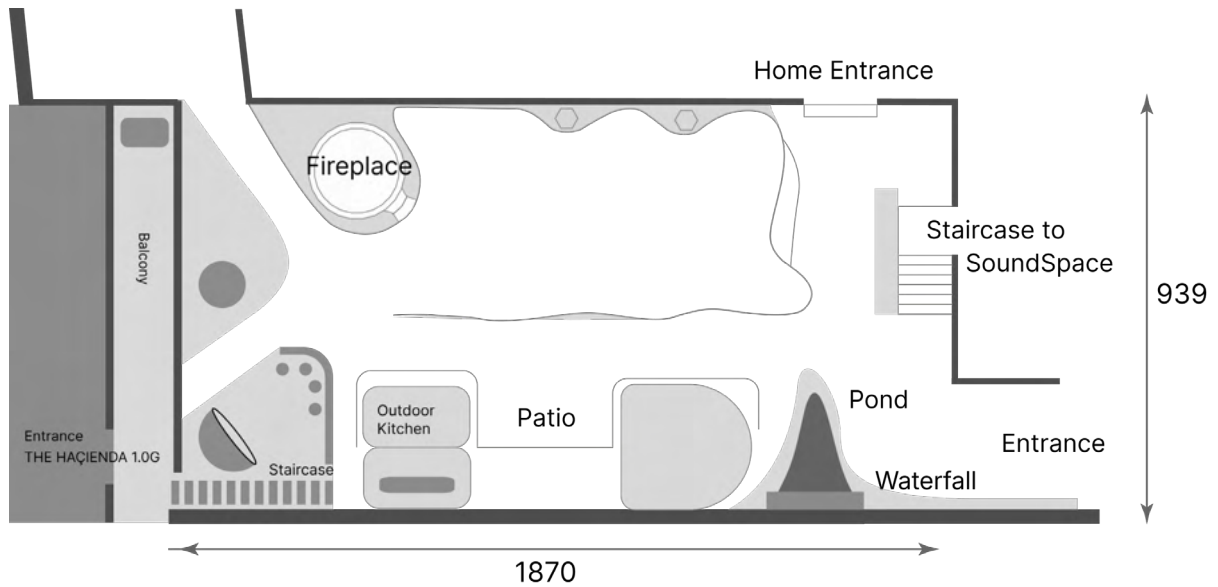
#### **Sound**

- Ambient sound system with Bose outdoor speakers





## FLOOR PLAN

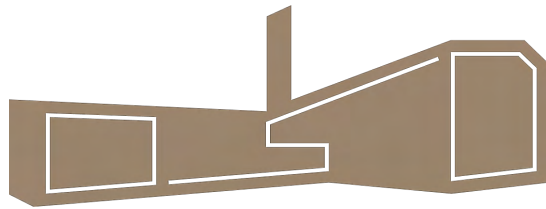


## SPECIALS

The garden at Old Smithy's Dizzle is partially weatherproof. Soundproofing from the neighboring yard not only ensures peace and quiet, but also provides privacy.

The barbecue area has an integrated extractor fan in the glass roof, so that up to 10 people can sit here comfortably.





*What kind of experience will you have  
with us at our home?*